

ZEVIM SYSTEM "AS-SERIES" VEHICLE RACKING SYSTEM

zevim

5 Year
warranty



OPTIMAL EFFICIENCY WITH SOLID AND COST-EFFECTIVE SOLUTIONS FOR YOUR VAN



ZEVIM: THE INDIVIDUAL COMPONENTS

The Zevim vehicle racking system is a modular system made up of various separate components. The merging of these components ultimately creates to various customer-specific vehicle equipment. The various components differ in height, depth and width, and the enormous range of components enables many different combinations

and varieties. As such, every customer can have their own unique shelving system in their van. Below are images of the various components. On the following pages, you will find details on these components, such as their technical specifications and dimensions.

COMPONENTS



Side panels page 4



Aluminium perforated plate for side panels page 6



Frame bar page 9



Aluminium flap page 10



Aluminium plinth/toeboard page 12



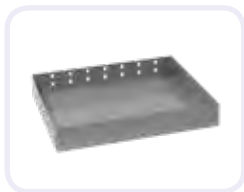
Case/toolbox clamping/lock possibilities page 15



Extendable/foldable workbench page 16



Shelf with dividers / high back page 19



Shelf with dividers / low back page 20



Shelf with flap page 23



Shelf for bins page 27



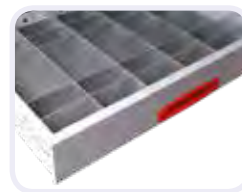
Universal shelf page 28



Plastic bins for universal shelf page 30



Drawers with dividers page 33



Accessories for drawers page 36



Case plateau / Shelf for cases page 39



Sortiments cases page 40



Top tray with dividers page 44



Heavy duty sled page 46



Workbench page 48



LED lights page 50



Accessories page 54



Equipment boards and tool holders page 58



Airlane tracks, poles, lashing straps and lashing points page 63

SIDE PANELS

The idea behind the modular Zevim "AS series" is that a frame is constructed based on the width, depth and height of the car, consisting of side panels (vertical) and frame profiles (horizontal).

The side panels are available in five sizes (260,360,460,507,760 mm).

These side panels can then be combined with loose (horizontal) components. There are many different side panels available, starting from 105 mm, at 35 mm intervals. The side panels with multiples of 105 mm

are usually in stock. The side panels are supplied with fixing holes at 17,5 mm intervals to which the various components can be attached.

We have also create mounting points for the slides (35 mm each) to which drawers and case tableaus can be attached. The different sizes of side panels also be combined with one another. This makes this system very flexible; systems of almost any desired height, dept hand width can be created.

Side panels

Dimension Hight in mm	Article number				
	Width: 260 mm	Width: 360 mm	Width: 460 mm	Width: 507 mm	Width: 760 mm
105	ZM-300-003.1-0260105	ZM-300-003.1-0360105	ZM-300-003.1-0460105	×	×
140	ZM-300-003.1-0260140	ZM-300-003.1-0360140	ZM-300-003.1-0460140	ZM-300-003.1-0500140	ZM-300-003.1-0760140
175	ZM-300-003.1-0260175	ZM-300-003.1-0360175	ZM-300-003.1-0460175	ZM-300-003.1-0500175	ZM-300-003.1-0760175
210	ZM-300-003.1-0260210	ZM-300-003.1-0360210	ZM-300-003.1-0460210	ZM-300-003.1-0500210	ZM-300-003.1-0760210
245	ZM-300-003.1-0260245	ZM-300-003.1-0360245	ZM-300-003.1-0460245	ZM-300-003.1-0500245	ZM-300-003.1-0760245
280	ZM-300-003.1-0260280	ZM-300-003.1-0360280	ZM-300-003.1-0460280	ZM-300-003.1-0500280	ZM-300-003.1-0760280
315	ZM-300-003.1-0260315	ZM-300-003.1-0360315	ZM-300-003.1-0460315	ZM-300-003.1-0500315	ZM-300-003.1-0760315
350	ZM-300-003.1-0260350	ZM-300-003.1-0360350	ZM-300-003.1-0460350	ZM-300-003.1-0500350	ZM-300-003.1-0760350
385	ZM-300-003.1-0260385	ZM-300-003.1-0360385	ZM-300-003.1-0460385	ZM-300-003.1-0500385	ZM-300-003.1-0760385
420	ZM-300-003.1-0260420	ZM-300-003.1-0360420	ZM-300-003.1-0460420	ZM-300-003.1-0500420	ZM-300-003.1-0760420
455	ZM-300-003.1-0260455	ZM-300-003.1-0360455	ZM-300-003.1-0460455	ZM-300-003.1-0500455	ZM-300-003.1-0760455
490	ZM-300-003.1-0260490	ZM-300-003.1-0360490	ZM-300-003.1-0460490	ZM-300-003.1-0500490	ZM-300-003.1-0760490
525	ZM-300-003.1-0260525	ZM-300-003.1-0360525	ZM-300-003.1-0460525	ZM-300-003.1-0500525	ZM-300-003.1-0760525
560	ZM-300-003.1-0260560	ZM-300-003.1-0360560	ZM-300-003.1-0460560	ZM-300-003.1-0500560	ZM-300-003.1-0760560
595	ZM-300-003.1-0260595	ZM-300-003.1-0360595	ZM-300-003.1-0460595	ZM-300-003.1-0500595	ZM-300-003.1-0760595
630	ZM-300-003.1-0260630	ZM-300-003.1-0360630	ZM-300-003.1-0460630	ZM-300-003.1-0500630	ZM-300-003.1-0760630
665	ZM-300-003.1-0260665	ZM-300-003.1-0360665	ZM-300-003.1-0460665	×	×
700	ZM-300-003.1-0260700	ZM-300-003.1-0360700	ZM-300-003.1-0460700	×	×
735	ZM-300-003.1-0260735	ZM-300-003.1-0360735	ZM-300-003.1-0460735	ZM-300-003.1-0500735	ZM-300-003.1-0760735
770	ZM-300-003.1-0260770	ZM-300-003.1-0360770	ZM-300-003.1-0460770	×	×
805	ZM-300-003.1-0260805	ZM-300-003.1-0360805	ZM-300-003.1-0460805	×	×
840	ZM-300-003.1-0260840	ZM-300-003.1-0360840	ZM-300-003.1-0460840	ZM-300-003.1-0500840	ZM-300-003.1-0760840
875	ZM-300-003.1-0260875	ZM-300-003.1-0360875	ZM-300-003.1-0460875	×	×
910	ZM-300-003.1-0260910	ZM-300-003.1-0360910	ZM-300-003.1-0460910	×	×
945	ZM-300-003.1-0260945	ZM-300-003.1-0360945	ZM-300-003.1-0460945	ZM-300-003.1-0500945	ZM-300-003.1-0760945
980	ZM-300-003.1-0260980	ZM-300-003.1-0360980	ZM-300-003.1-0460980	×	×
1015	ZM-300-003.1-0261015	ZM-300-003.1-0361015	ZM-300-003.1-0461015	×	×
1050	ZM-300-003.1-0261050	ZM-300-003.1-0361050	ZM-300-003.1-0461050	ZM-300-003.1-0501050	ZM-300-003.1-0761050
1085	ZM-300-003.1-0261085	ZM-300-003.1-0361085	ZM-300-003.1-0461085	×	×
1120	ZM-300-003.1-0261120	ZM-300-003.1-0361120	ZM-300-003.1-0461120	×	×
1155	ZM-300-003.1-0261155	ZM-300-003.1-0361155	ZM-300-003.1-0461155	ZM-300-003.1-0501155	ZM-300-003.1-0761155
1190	ZM-300-003.1-0261190	ZM-300-003.1-0361190	ZM-300-003.1-0461190	×	×
1225	ZM-300-003.1-0261225	ZM-300-003.1-0361225	ZM-300-003.1-0461225	×	×
1260	ZM-300-003.1-0261260	ZM-300-003.1-0361260	ZM-300-003.1-0461260	ZM-300-003.1-0501260	ZM-300-003.1-0761260
1295	ZM-300-003.1-0261295	ZM-300-003.1-0361295	ZM-300-003.1-0461295	×	×
1365	×	ZM-300-003.1-0361365	ZM-300-003.1-0461365	ZM-300-003.1-0501365	ZM-300-003.1-0761365
1470	×	ZM-300-003.1-0361470	ZM-300-003.1-0461470	ZM-300-003.1-0501470	ZM-300-003.1-0761470
1575	×	ZM-300-003.1-0361575	ZM-300-003.1-0461575	ZM-300-003.1-0501575	ZM-300-003.1-0761575
1680	×	ZM-300-003.1-0361680	ZM-300-003.1-0461680	ZM-300-003.1-0501680	ZM-300-003.1-0761680



5



Side panels 260, 360 en 460



Side panels 360 width



Side panel 360 width



Detail side panel 460 width

ALUMINIUM PERFO PLATE

All side panels can be supplied with aluminum perforated plate. This aluminum perforated plate is required on the end faces of the shelving system for finishing the side wall and can also be used directly for the attachment of the various accessories or other materials. Our extensive range of tool hooks can also be combined with these perforated plates.

Aluminium Perfo plate for side panels

Dimension Hight in mm	Article number				
	Width: 260 mm	Width: 360 mm	Width: 460 mm	Width: 507 mm	Width: 760 mm
105	ZM-301-003.1-0260105	ZM-301-003.1-0360105	ZM-301-003.1-0460105	×	×
140	ZM-301-003.1-0260140	ZM-301-003.1-0360140	ZM-301-003.1-0460140	ZM-301-003.1-0500140	ZM-301-003.1-0760140
175	ZM-301-003.1-0260175	ZM-301-003.1-0360175	ZM-301-003.1-0460175	ZM-301-003.1-0500175	ZM-301-003.1-0760175
210	ZM-301-003.1-0260210	ZM-301-003.1-0360210	ZM-301-003.1-0460210	ZM-301-003.1-0500210	ZM-301-003.1-0760210
245	ZM-301-003.1-0260245	ZM-301-003.1-0360245	ZM-301-003.1-0460245	ZM-301-003.1-0500245	ZM-301-003.1-0760245
280	ZM-301-003.1-0260280	ZM-301-003.1-0360280	ZM-301-003.1-0460280	ZM-301-003.1-0500280	ZM-301-003.1-0760280
315	ZM-301-003.1-0260315	ZM-301-003.1-0360315	ZM-301-003.1-0460315	ZM-301-003.1-0500315	ZM-301-003.1-0760315
350	ZM-301-003.1-0260350	ZM-301-003.1-0360350	ZM-301-003.1-0460350	ZM-301-003.1-0500350	ZM-301-003.1-0760350
385	ZM-301-003.1-0260385	ZM-301-003.1-0360385	ZM-301-003.1-0460385	ZM-301-003.1-0500385	ZM-301-003.1-0760385
420	ZM-301-003.1-0260420	ZM-301-003.1-0360420	ZM-301-003.1-0460420	ZM-301-003.1-0500420	ZM-301-003.1-0760420
455	ZM-301-003.1-0260455	ZM-301-003.1-0360455	ZM-301-003.1-0460455	ZM-301-003.1-0500455	ZM-301-003.1-0760455
490	ZM-301-003.1-0260490	ZM-301-003.1-0360490	ZM-301-003.1-0460490	ZM-301-003.1-0500490	ZM-301-003.1-0760490
525	ZM-301-003.1-0260525	ZM-301-003.1-0360525	ZM-301-003.1-0460525	ZM-301-003.1-0500525	ZM-301-003.1-0760525
560	ZM-301-003.1-0260560	ZM-301-003.1-0360560	ZM-301-003.1-0460560	ZM-301-003.1-0500560	ZM-301-003.1-0760560
595	ZM-301-003.1-0260595	ZM-301-003.1-0360595	ZM-301-003.1-0460595	ZM-301-003.1-0500595	ZM-301-003.1-0760595
630	ZM-301-003.1-0260630	ZM-301-003.1-0360630	ZM-301-003.1-0460630	ZM-301-003.1-0500630	ZM-301-003.1-0760630
665	ZM-301-003.1-0260665	ZM-301-003.1-0360665	ZM-301-003.1-0460665	×	×
700	ZM-301-003.1-0260700	ZM-301-003.1-0360700	ZM-301-003.1-0460700	×	×
735	ZM-301-003.1-0260735	ZM-301-003.1-0360735	ZM-301-003.1-0460735	ZM-301-003.1-0500735	ZM-301-003.1-0760735
770	ZM-301-003.1-0260770	ZM-301-003.1-0360770	ZM-301-003.1-0460770	×	×
805	ZM-301-003.1-0260805	ZM-301-003.1-0360805	ZM-301-003.1-0460805	×	×
840	ZM-301-003.1-0260840	ZM-301-003.1-0360840	ZM-301-003.1-0460840	ZM-301-003.1-0500840	ZM-301-003.1-0760840
875	ZM-301-003.1-0260875	ZM-301-003.1-0360875	ZM-301-003.1-0460875	×	×
910	ZM-301-003.1-0260910	ZM-301-003.1-0360910	ZM-301-003.1-0460910	×	×
945	ZM-301-003.1-0260945	ZM-301-003.1-0360945	ZM-301-003.1-0460945	ZM-301-003.1-0500945	ZM-301-003.1-0760945
980	ZM-301-003.1-0260980	ZM-301-003.1-0360980	ZM-301-003.1-0460980	×	×
1015	ZM-301-003.1-0261015	ZM-301-003.1-0361015	ZM-301-003.1-0461015	×	×
1050	ZM-301-003.1-0261050	ZM-301-003.1-0361050	ZM-301-003.1-0461050	ZM-301-003.1-0501050	ZM-301-003.1-0761050
1085	ZM-301-003.1-0261085	ZM-301-003.1-0361085	ZM-301-003.1-0461085	×	×
1120	ZM-301-003.1-0261120	ZM-301-003.1-0361120	ZM-301-003.1-0461120	×	×
1155	ZM-301-003.1-0261155	ZM-301-003.1-0361155	ZM-301-003.1-0461155	ZM-301-003.1-0501155	ZM-301-003.1-0761155
1190	ZM-301-003.1-0261190	ZM-301-003.1-0361190	ZM-301-003.1-0461190	×	×
1225	ZM-301-003.1-0261225	ZM-301-003.1-0361225	ZM-301-003.1-0461225	×	×
1260	ZM-301-003.1-0261260	ZM-301-003.1-0361260	ZM-301-003.1-0461260	ZM-301-003.1-0501260	ZM-301-003.1-0761260
1295	ZM-301-003.1-0261295	ZM-301-003.1-0361295	ZM-301-003.1-0461295	×	×
1365	×	ZM-301-003.1-0361365	ZM-301-003.1-0461365	ZM-301-003.1-0501365	ZM-301-003.1-0761365
1470	×	ZM-301-003.1-0361470	ZM-301-003.1-0461470	ZM-301-003.1-0501470	ZM-301-003.1-0761470
1575	×	ZM-301-003.1-0361575	ZM-301-003.1-0461575	ZM-301-003.1-0501575	ZM-301-003.1-0761575
1680	×	ZM-301-003.1-0361680	ZM-301-003.1-0461680	ZM-301-003.1-0501680	ZM-301-003.1-0761680



Perfo plate



Perfo plates



Detail perfo plate



FRAME BAR

The frame bars combined with the side panels and reinforcing steel triangles provide a stable base for all of the other aluminium and steel components to be affixed to. The frame profiles are available in different varieties. The standard height can be used for connecting the side

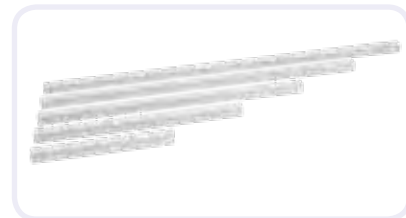
panels, and the enhanced performance profiles are to be used if widths are to be divided. We also carry frame profiles with lashing profile rail for attaching standardized fittings.

Steel frame bar (front)

Dimension W x H mm	Article number
300 x 35	ZM-302-030.1-035
400 x 35	ZM-302-040.1-035
447 x 35	ZM-302-044.1-035
700 x 35	ZM-302-070.1-035
954 x 35	ZM-302-095.1-035
1207 x 35	ZM-302-120.1-035
1461 x 35	ZM-302-146.1-035

Steel frame bar (back)

Dimension W x H mm	Article number
300 x 35	ZM-302-030.4-035
400 x 35	ZM-302-040.4-035
447 x 35	ZM-302-044.4-035
700 x 35	ZM-302-070.4-035
954 x 35	ZM-302-095.4-035
1207 x 35	ZM-302-120.4-035
1461 x 35	ZM-302-146.4-035



Frame bars

Aluminium frame bar (front)

Dimension W x H mm	Article number
447 x 35	ZMA-302-044.1-035
700 x 35	ZMA-302-070.1-035
954 x 35	ZMA-302-095.1-035
1207 x 35	ZMA-302-120.1-035
1461 x 35	ZMA-302-146.1-035

Aluminium frame bar (back)

Dimension W x H mm	Article number
447 x 35	ZMA-302-044.4-035
700 x 35	ZMA-302-070.4-035
954 x 35	ZMA-302-095.4-035
1207 x 35	ZMA-302-120.4-035
1461 x 35	ZMA-302-146.4-035



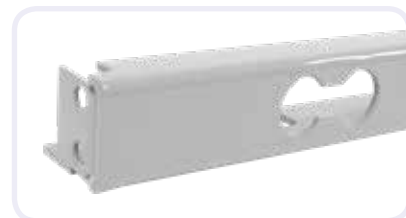
Frame bar (447 x 35 mm)

Steel bottom frame bar with lashing profile

Dimension W x H mm	Article number
447 x 35	ZM-303-044.1-035
700 x 35	ZM-303-070.1-035
954 x 35	ZM-303-095.1-035
1207 x 35	ZM-303-120.1-035
1461 x 35	ZM-303-146.1-035

Steel frame bar with lashing profile

Dimension W x H mm	Article number
447 x 35	ZM-303-044.3-035
700 x 35	ZM-303-070.3-035
954 x 35	ZM-303-095.3-035
1207 x 35	ZM-303-120.3-035
1461 x 35	ZM-303-146.3-035



Detail steel bottom frame bar

Steel Frame bar (high 52,5 mm) (set of 2 pieces, front + back)

Dimension W x H mm	Article number
447 x 52,5	ZM-304-044.1-052
700 x 52,5	ZM-304-070.1-052
954 x 52,5	ZM-304-095.1-052
1207 x 52,5	ZM-304-120.1-052
1461 x 52,5	ZM-304-146.1-052

Frame high 70 mm (complete frame, welded)

Dimension W x H mm	Article number
447 x 70	ZMA-304-044.8-070
700 x 70	ZMA-304-070.8-070
954 x 70	ZMA-304-095.8-070
1207 x 70	ZMA-304-120.8-070
1461 x 70	ZMA-304-146.8-070



Detail steel frame bar



Detail frame bar high

ALUMINIUM FLAP

The powder-coated aluminum flaps can be used throughout the system. The profiling of the flaps ensures a very stable separation of the storage compartments. Moreover, the flaps are easy to open and close with just one hand. The aluminum flaps are available in two different heights (155 and 250 mm), and, of course, in all of the different widths (447, 700, 954, 1207 and 1461)

Aluminium flap Height 155 mm

Dimension W x H mm	Article number
447 x 155	ZMA-305-044.1-155
700 x 155	ZMA-305-070.1-155
954 x 155	ZMA-305-095.1-155
1207 x 155	ZMA-305-120.1-155
1461 x 155	ZMA-305-146.1-155



Flap, height 155 mm

Aluminium flap Height 250 mm

Dimension W x H mm	Article number
447 x 250	ZMA-305-044.1-250
700 x 250	ZMA-305-070.1-250
954 x 250	ZMA-305-095.1-250
1207 x 250	ZMA-305-120.1-250
1461 x 250	ZMA-305-146.1-250



Flap, height 250 mm



Detail Flap



ALUMINIUM PLINTH/TOEBOARD

As an alternative to flaps, plinths can also be used to create partitions on the floor of the van. These plinths are available in all width sizes and in two different heights (70 and 105 mm)

Aluminium plinth/toeboard, 70 mm high

Dimension W x H mm	Article number
447 x 70	ZMA-307-044.1-070
700 x 70	ZMA-307-070.1-070
954 x 70	ZMA-307-095.1-070
1207 x 70	ZMA-307-120.1-070
1461 x 70	ZMA-307-146.1-070



Aluminium plinth/toeboard, 70 mm high

Aluminium plinth/toeboard, 105 mm high

Dimension W x H mm	Article number
447 x 105	ZMA-307-044.1-105
700 x 105	ZMA-307-070.1-105
954 x 105	ZMA-307-095.1-105
1207 x 105	ZMA-307-120.1-105
1461 x 105	ZMA-307-146.1-105



Aluminium plinth/toeboard, 105 mm high



Aluminium plinth/toeboard 70 and 105 mm high





CASE/TOOLBOX CLAMPING/LOCK POSSIBILITIES

We have various options for storing tool boxes and cases. To keep them in place we have the following lashing options: ① The clamping device (available in five different lengths (447, 700, 954, 1207 and 1461 mm). ② The option with the lashing strap.

③ A more cost-effective option (but less fixed) can be realized with an elastic rubber strap.

①

Case clamping device

Dimension L in mm	Article number	
	Depth: 360 mm	Depth: 460 mm
447	ZM-306-044.1-036	ZM-306-044.1-046
700	ZM-306-070.1-036	ZM-306-070.1-046
954	ZM-306-095.1-036	ZM-306-095.1-046
1207	ZM-306-120.1-036	ZM-306-120.1-046
1461	ZM-306-146.1-036	ZM-306-146.1-046



Case clamping device

②

Lock set with lashing strap for case/toolboxes

Dimension L in mm	Article number
447	ZM-306-044.2-01.00
700	ZM-306-070.2-01.00
954	ZM-306-095.2-01.00
1207	ZM-306-120.2-01.00
1461	ZM-306-146.2-01.00



Example of case/tool boxes lock set with lashing strap

As option, the frame bar with lashing points (ZM-303 see page 9) can be extra mounted at the back. With this extra frame bar, the space for the cases/toolboxes can also easily be used for half, with the cases optimally fixed.

③

Lock set with rubber strap for case/toolboxes

Dimension L in mm	Article number
447	ZM-306-044.4-01.00
700	ZM-306-070.4-01.00
954	ZM-306-095.4-01.00
1207	ZM-306-120.4-01.00
1461	ZM-306-146.4-01.00



Example of case/tool boxes lock set with rubber strap

EXTENDABLE/FOLDABLE WORKBENCH

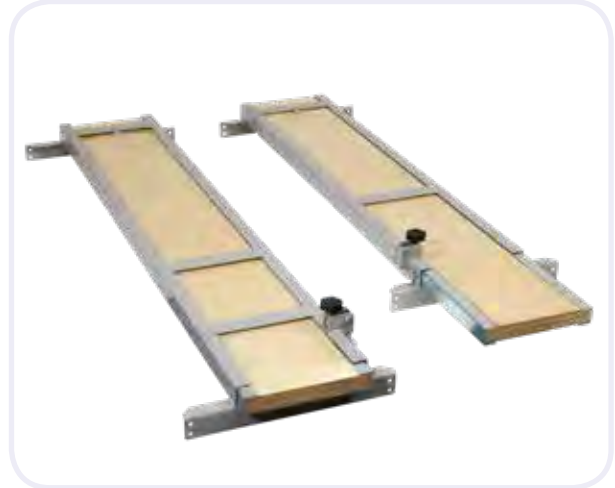
Different varieties of work benches on which a vice can be placed are available. Our program contains pull-out/extendable workbenches that can be installed in the side panels and also separately mounted workbenches. These separate workbenches are also available in different varieties (with gas spring or adjustable tripod).

Extendable workbench, for left side of the van

Dimension L in mm	Article number	
	Depth: 360 mm	Depth: 460 mm
700	ZM-308-070.1-036010-L	ZM-308-070.1-046010-L
954	ZM-308-095.1-036010-L	ZM-308-095.1-046010-L
1207	ZM-308-120.1-036010-L	ZM-308-120.1-046010-L
1461	ZM-308-146.1-036010-L	ZM-308-146.1-046010-L

Extendable workbench, for right side of the van

Dimension L in mm	Article number	
	Depth: 360 mm	Depth: 460 mm
700	ZM-308-070.1-036010-R	ZM-308-070.1-046010-R
954	ZM-308-095.1-036010-R	ZM-308-095.1-046010-R
1207	ZM-308-120.1-036010-R	ZM-308-120.1-046010-R
1461	ZM-308-146.1-036010-R	ZM-308-146.1-046010-R



Extendable workbenches



Foldable workbench with gas spring

Foldable workbench (gas spring)

Description	Article number
Foldable workbench with gas spring	ZM-147-K.GV01-01

Foldable workbench (tripod)

Description	Article number
Foldable workbench with tripod	ZM-147-K.01-02
Augmentation for foldable workbench with tripod W225xD280xH150 mm	ZM-147-K-01-02.01



Augmentation for foldable workbench with tripod



Combination of the foldable workbench with tripod and the augmentation



Foldable workbench with tripod





SHELF WITH DIVIDERS / HIGH BACK

We carry various types of shelves; with high backs or low backs, with divided compartments, with a front flap, universal shelves and shelves for storage bins. In addition most of the shelves are available in steel as well as aluminum. Each shelf has its own specific application. This page and the following three pages contain images of and details on our various shelf types.

Steel shelf with dividers, high back (only on demand; not in stock)

Dimension L x H mm	Article number		
	Depth: 260 mm	Depth: 360 mm	Depth: 460 mm
447 x 140	ZM-330-044.1-026014	ZM-330-044.1-036014	ZM-330-044.1-046014
700 x 140	ZM-330-070.1-026014	ZM-330-070.1-036014	ZM-330-070.1-046014
954 x 140	ZM-330-095.1-026014	ZM-330-095.1-036014	ZM-330-095.1-046014
1207 x 140	ZM-330-120.1-026014	ZM-330-120.1-036014	ZM-330-120.1-046014
1461 x 140	ZM-330-146.1-026014	ZM-330-146.1-036014	ZM-330-146.1-046014



Shelf high back 447 x 360 mm



Shelf high back 700 x 360 mm

Aluminium shelf with dividers, high back

Dimension L x H mm	Article number		
	Depth: 260 mm	Depth: 360 mm	Depth: 460 mm
447 x 140	ZMA-330-044.1-026014	ZMA-330-044.1-036014	ZMA-330-044.1-046014
700 x 140	ZMA-330-070.1-026014	ZMA-330-070.1-036014	ZMA-330-070.1-046014
954 x 140	ZMA-330-095.1-026014	ZMA-330-095.1-036014	ZMA-330-095.1-046014
1207 x 140	ZMA-330-120.1-026014	ZMA-330-120.1-036014	ZMA-330-120.1-046014
1461 x 140	ZMA-330-146.1-026014	ZMA-330-146.1-036014	ZMA-330-146.1-046014



Shelf high back 954 x 360 mm



Shelf high back 1207 x 360 mm



Shelf high back, depth 260, 360 and 460 mm



Shelf high back 1461 x 360 mm

SHELF WITH DIVIDERS / LOW BACK

Both the frontside and backside of these shelves are the same height. You can also place dividers in the desired locations.

Steel shelf with dividers, low back (only on demand; not in stock)

Dimension L x H mm	Article number		
	Depth: 260 mm	Depth: 360 mm	Depth: 460 mm
447 x 67	ZM-331-044.1-026007	ZM-331-044.1-036007	ZM-331-044.1-046007
700 x 67	ZM-331-070.1-026007	ZM-331-070.1-036007	ZM-331-070.1-046007
954 x 67	ZM-331-095.1-026007	ZM-331-095.1-036007	ZM-331-095.1-046007
1207 x 67	ZM-331-120.1-026007	ZM-331-120.1-036007	ZM-331-120.1-046007
1461 x 67	ZM-331-146.1-026007	ZM-331-146.1-036007	ZM-331-146.1-046007

Aluminium shelf with dividers, low back

Dimension L x H mm	Article number		
	Depth: 260 mm	Depth: 360 mm	Depth: 460 mm
447 x 67	ZMA-331-044.1-026007	ZMA-331-044.1-036007	ZMA-331-044.1-046007
700 x 67	ZMA-331-070.1-026007	ZMA-331-070.1-036007	ZMA-331-070.1-046007
954 x 67	ZMA-331-095.1-026007	ZMA-331-095.1-036007	ZMA-331-095.1-046007
1207 x 67	ZMA-331-120.1-026007	ZMA-331-120.1-036007	ZMA-331-120.1-046007
1461 x 67	ZMA-331-146.1-026007	ZMA-331-146.1-036007	ZMA-331-146.1-046007



Shelf low back 447 x 67 x 260 mm



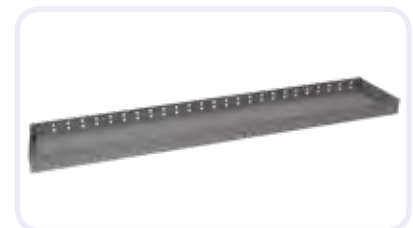
Shelf low back 700 x 67 x 260 mm



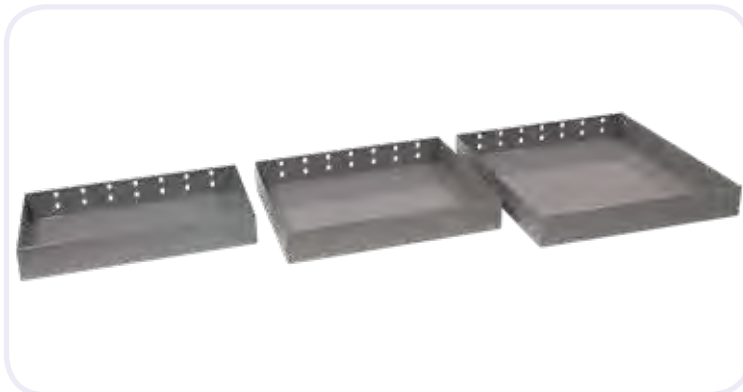
Shelf low back 954 x 67 x 260 mm



Shelf low back 1207 x 67 x 260 mm



Shelf low back 1461 x 67 x 260 mm



Shelf low back, depth 260, 360 and 460 mm





SHELF WITH FLAP

Shelves with flaps make sure that the full height of the shelf can be used, ensuring effective use of the available space. By opening the flap, the materials inside are easy to retrieve. These shelves are often used for storing cardboard boxes and other packaged materials.

Steel shelf with flap (only on demand; not in stock)

Dimension L x H mm	Article number		
	Depth: 260 mm	Depth: 360 mm	Depth: 460 mm
447 x 140	ZM-332-044.1-026014	ZM-332-044.1-036014	ZM-332-044.1-046014
700 x 140	ZM-332-070.1-026014	ZM-332-070.1-036014	ZM-332-070.1-046014
954 x 140	ZM-332-095.1-026014	ZM-332-095.1-036014	ZM-332-095.1-046014
1207 x 140	ZM-332-120.1-026014	ZM-332-120.1-036014	ZM-332-120.1-046014
1461 x 140	ZM-332-146.1-026014	ZM-332-146.1-036014	ZM-332-146.1-046014

Aluminium shelf with flap

Dimension L x H mm	Article number		
	Depth: 260 mm	Depth: 360 mm	Depth: 460 mm
447 x 140	ZMA-332-044.1-026014	ZMA-332-044.1-036014	ZMA-332-044.1-046014
700 x 140	ZMA-332-070.1-026014	ZMA-332-070.1-036014	ZMA-332-070.1-046014
954 x 140	ZMA-332-095.1-026014	ZMA-332-095.1-036014	ZMA-332-095.1-046014
1207 x 140	ZMA-332-120.1-026014	ZMA-332-120.1-036014	ZMA-332-120.1-046014
1461 x 140	ZMA-332-146.1-026014	ZMA-332-146.1-036014	ZMA-332-146.1-046014



Shelf with flap 447 x 360 mm



Shelf with flap 700 x 360 mm



Shelf with flap 954 x 360 mm



Shelf with flap 1207 x 360 mm



Shelf with flap 1461 x 460 mm



Detail shelf with flap

SHELF ACCESSORIES: DIVIDERS AND ANTI-SLIP MATS

Dividers as sparepart for shelves ZM 330 (page 19) and ZM 331 (page 20).

Dividers complete with mounting clips.

Aluminium divider high

Article number		
Depth: 260 mm	Depth: 360 mm	Depth: 460 mm
ZMA-330-260	ZMA-330-360	ZMA-330-460

Aluminium dividers high (set of 3 dividers)

Article number		
Depth: 260 mm	Depth: 360 mm	Depth: 460 mm
ZMA-330-260-3	ZMA-330-360-3	ZMA-330-460-3



Divider high

Aluminium divider low

Article number		
Depth: 260 mm	Depth: 360 mm	Depth: 460 mm
ZMA-331-260	ZMA-331-360	ZMA-331-460

Aluminium dividers low (set of 3 dividers)

Article number		
Depth: 260 mm	Depth: 360 mm	Depth: 460 mm
ZMA-331-260-3	ZMA-331-360-3	ZMA-331-460-3



Divider low

The anti-slip mats assure that the materials stay in place. Anti-slip mats are used also in drawers and shelves to protect the materials and reduce the noise.

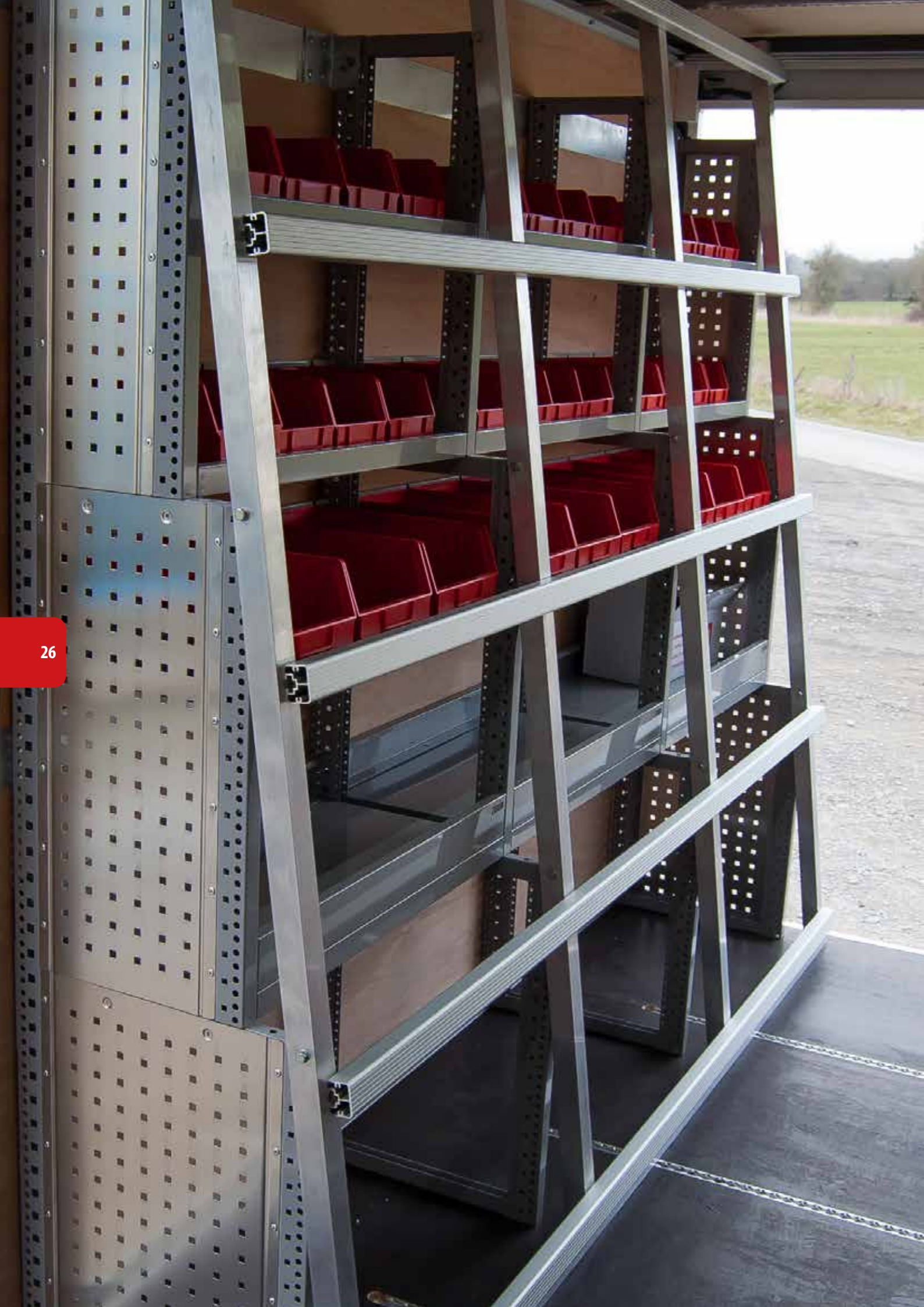
Anti-slip mats shelves

Dimension W in mm	Article number		
	Depth: 250 mm	Depth: 350 mm	Depth: 450 mm
447	ZM-160-044.1-025	ZM-160-044.1-035	ZM-160-044.1-045
700	ZM-160-070.1-025	ZM-160-070.1-035	ZM-160-070.1-045
954	ZM-160-095.1-025	ZM-160-095.1-035	ZM-160-095.1-045
1207	ZM-160-120.1-025	ZM-160-120.1-035	ZM-160-120.1-045
1461	ZM-160-146.1-025	ZM-160-146.1-035	ZM-160-146.1-045



Anti-slip mat





SHELF FOR BINS

Shelves for bins are ideal for storing small materials such as fixtures and assembly hardware. The storage bins are removable and easy to carry to the workplace. The containers are locked onto the shelf, which prevents shifting while driving.

Shelf for bins, 131 mm high

Dimension L x H mm	Article number	Color
	<i>Depth: 260 mm</i>	<i>Bins</i>
700 x 131	ZM-333-070.1-026013	● ●
954 x 131	ZM-333-095.1-026013	● ●
1267 x 131	ZM-333-120.1-026013	● ●
1461 x 131	ZM-333-146.1-026013	● ●



Shelf for bins, with bins

Shelf for bins, 156 mm high

Dimension L x H mm	Article number	Color
	<i>Depth: 360 mm</i>	<i>Bins</i>
700 x 156	ZM-333-070.1-036015	● ●
954 x 156	ZM-333-095.1-036015	● ●
1267 x 156	ZM-333-120.1-036015	● ●
1461 x 156	ZM-333-146.1-036015	● ●



Shelf for bins, with bins

Plastic bins loose

Dimension W x D x H mm	Article number	Color
103 x 166 x 73	ZM-123-102	● ● ●
146 x 237 x 124	ZM-123-103	● ● ●
205 x 335 x 149	ZM-123-104	● ● ●
305 x 480 x 177	ZM-123-105	● ● ●



Shelf for bins, with bins



Shelf for bins, with bins



Plastic bins

UNIVERSAL SHELF

These shelves can be used universally with specific profiles. For example, we have several profiles for placing various plastic boxes, profiles for steel and plastic cases and profiles for when a shelf needs to carry heavier loads.

Steel universal shelf

Dimension W x H mm	Article number		
	Depth: 260 mm	Depth: 360 mm	Depth: 460 mm
447 x 35	ZM-335-044.1-026003	ZM-335-044.1-036003	ZM-335-044.1-046003
700 x 35	ZM-335-070.1-026003	ZM-335-070.1-036003	ZM-335-070.1-046003
954 x 35	ZM-335-095.1-026003	ZM-335-095.1-036003	ZM-335-095.1-046003
1207 x 35	ZM-335-120.1-026003	ZM-335-120.1-036003	ZM-335-120.1-046003
1461 x 35	ZM-335-146.1-026003	ZM-335-146.1-036003	ZM-335-146.1-046003



Universal shelf, width 1521 mm

Aluminium universal shelf

Dimension W x H mm	Article number		
	Depth: 260 mm	Depth: 360 mm	Depth: 460 mm
447 x 35	ZMA-335-044.1-026003	ZMA-335-044.1-036003	ZMA-335-044.1-046003
700 x 35	ZMA-335-070.1-026003	ZMA-335-070.1-036003	ZMA-335-070.1-046003
954 x 35	ZMA-335-095.1-026003	ZMA-335-095.1-036003	ZMA-335-095.1-046003
1207 x 35	ZMA-335-120.1-026003	ZMA-335-120.1-036003	ZMA-335-120.1-046003
1461 x 35	ZMA-335-146.1-026002	ZMA-335-146.1-036003	ZMA-335-146.1-046003

The sortiment cases can be positioned on the universal shelves by means of an adapter set or on a pull out case plateau (see page 39). An adapterset is needed for use on an universal shelf. Those adapter sets are applicable on both 360 and 460 mm depth shelves.

Adaptersets for sortimentcases for ZM(A)335

Dimension L in mm	Article number
447	ZM-335-044.1-01-AKR
700	ZM-335-070.1-01-AKR
954	ZM-335-095.1-02-AKR
1207	ZM-335-120.1-02-AKR
1461	ZM-335-146.1-03-AKR



Adaptersets for sortimentcases



Adaptersets for sortimentcases with one sortimentcase

UNIVERSAL SHELF

Steel profile front

Dimension W x H mm	Article number
	<i>Front height: 20 mm</i>
447	ZM-335-044.8-VP20
700	ZM-335-070.8-VP20
954	ZM-335-095.8-VP20
1207	ZM-335-120.8-VP20
1461	ZM-335-146.8-VP20

Steel support profile for heavy load

Dimension W in mm	Article number
447	ZM-335-044.4-OP
700	ZM-335-070.4-OP
954	ZM-335-095.4-OP
1207	ZM-335-120.4-OP
1461	ZM-335-146.4-OP



Steel profile front for universal shelf



Steel support profile for heavy load, for universal shelf



PLASTIC BINS

The universal shelves (see page 28) are mostly used in combination with the plastic boxes. This is because that the plastic boxes often appear in many different sizes. In particular, if the customer's existing boxes have to be combined with our Universal shelves in the vans.

Of course, we as Zevim have a standardized own range of plastic boxes. These are available in various designs and sizes. You can find them below in various widths, depths and heights.

Plastic Euro stackable containers, dimension 200 x 300 mm

Dimension H in mm	Article number	Color <i>Bin</i>
120	Z-133-020.1-030012	● ●

Plastic Euro stackable containers, dimension 300 x 400 mm

Dimension H in mm	Article number	Color <i>Bin</i>
120	Z-133-030.1-040012	● ●
180	Z-133-030.1-040018	● ●
220	Z-133-030.1-040022	● ●
280	Z-133-030.1-040028	●
320	Z-133-030.1-040032	●

Plastic Euro stackable containers, dimension 400 x 600 mm

Dimension H in mm	Article number	Color <i>Bin</i>
120	Z-133-040.1-060012	●
180	Z-133-040.1-060018	●
220	Z-133-040.1-060022	●
320	Z-133-040.1-060032	●
420	Z-133-040.1-060042	●

Plastic Euro stackable containers, dimension 400 x 600 mm With handle and cover

Dimension H in mm	Article number	Color <i>Bin</i>
75	Z-133-040.2-060008	●
120	Z-133-040.2-060012	●

Plastic storage bin

Dimension W x H mm	Article number		Color <i>Bin</i>
	Depth: 300 mm	Depth: 400 mm	
183 x 81	Z-134-018.1-030008	Z-134-018.1-040008	● ●
91 x 81	Z-134-009.1-030008	Z-134-009.1-040008	● ●
235 x 145	×	Z-134-023.1-040014	● ●

Accessories plastic storage bin

Dimension W x H mm	Article number	
	Divider for storage bin	Labels for storage bin
183 x 81	Z-134-018-01	Z-134-018-02
91 x 81	Z-134-009-01	Z-134-009-02
235 x 145	Z-134-023-01	Z-134-023-02



Plastic Euro stackable containers (300 x 400 x 120 mm)



Plastic Euro stackable containers (300 x 400 x 180 mm)



Plastic Euro stackable containers (300 x 400 x 220 mm)



Plastic storage bin



Plastic storage bin





DRAWERS WITH DIVIDERS

As with all components, we have to find the ideal mix of sturdiness and weight. The fronts and the hinge parts are made of steel and the drawer frame and the dividers are made of aluminum. The drawers have standard a set of dividers. Drawers are available in many different widths, depths and heights and can easily be mounted onto the sidepanels with slides (See elsewhere in the brochure).

Drawer (Alu/steel) with 3 dividers, width 447 mm

Dimension W x H mm	Article number			Color Handle
	Depth: 260 mm	Depth: 360 mm	Depth: 460 mm	
447 x 70	×	ZM-340-044.1-036070	ZM-340-044.1-046070	● ●
447 x 105	ZM-340-044.1-026100	ZM-340-044.1-036100	ZM-340-044.1-046090	● ●
447 x 140	ZM-340-044.1-026140	ZM-340-044.1-036140	ZM-340-044.1-046140	● ●
447 x 175	×	ZM-340-044.1-036170	ZM-340-044.1-046170	● ●
447 x 210	ZM-340-044.1-026200	ZM-340-044.1-036200	ZM-340-044.1-046200	● ●
447 x 300	×	ZM-340-044.1-036300	ZM-340-044.1-046300	● ●



Drawer (447 x 360 x 70 mm)

Drawer (Alu/steel) with 3 dividers, width 700 mm

Dimension W x H mm	Article number			Color Handle
	Depth: 260 mm	Depth: 360 mm	Depth: 460 mm	
700 x 70	×	ZM-340-070.1-036070	ZM-340-070.1-046070	● ●
700 x 105	ZM-340-070.1-026100	ZM-340-070.1-036100	ZM-340-070.1-046100	● ●
700 x 140	ZM-340-070.1-026140	ZM-340-070.1-036140	ZM-340-070.1-046140	● ●
700 x 175	×	ZM-340-070.1-036170	ZM-340-070.1-046170	● ●
700 x 210	ZM-340-070.1-026200	ZM-340-070.1-036200	ZM-340-070.1-046200	● ●
700 x 315	×	ZM-340-070.1-036300	ZM-340-070.1-046300	● ●



Drawer (700 x 360 x 210 mm)

Drawer (Alu/steel) with 3 dividers, width 954 mm

Dimension W x H mm	Article number			Color Handle
	Depth: 260 mm	Depth: 360 mm	Depth: 460 mm	
954 x 70	×	ZM-340-095.1-036070	ZM-340-095.1-046070	● ●
954 x 105	ZM-340-095.1-026100	ZM-340-095.1-036100	ZM-340-095.1-046090	● ●
954 x 140	ZM-340-095.1-026140	ZM-340-095.1-036140	ZM-340-095.1-046140	● ●
954 x 175	×	ZM-340-095.1-036170	ZM-340-095.1-046170	● ●
954 x 210	ZM-340-095.1-026200	ZM-340-095.1-036200	ZM-340-095.1-046200	● ●
954 x 315	×	ZM-340-095.1-036310	×	● ●



Drawer

Steel drawer with 3 dividers, width 1207 mm

Dimension W x H mm	Article number			Color Handle
	Depth: 260 mm	Depth: 360 mm	Depth: 460 mm	
1207 x 105	×	ZM-340-120.1-036100	ZM-340-120.1-046100	● ●
1207 x 140	×	ZM-340-120.1-036140	ZM-340-120.1-046140	● ●
1207 x 175	×	ZM-340-120.1-036170	ZM-340-120.1-046170	● ●



DRAWERS FOR SIDE DOORS POSITION

We also carry drawers which can be used in shelving which is positioned at the side doors. These drawers units are the same width (360 and 460 mm) as the depth sizes of the system. This allows you to easily access the drawers from a side door.

These drawers are available in two different lengths (507 and 760 mm) and three different heights (105, 140 and 210 mm).

Drawer (Alu/steel) with 3 dividers, width 300 mm

Dimension W x H mm	Article number	
	Depth: 507 mm	Depth: 760 mm
300 x 105	ZM-340-030.1-050100	ZM-340-030.1-076100
300 x 140	ZM-340-030.1-050140	ZM-340-030.1-076140
300 x 210	ZM-340-030.1-050200	ZM-340-030.1-076200



Drawer (300 x 105 x 760 mm)

Drawer (Alu/steel) with 3 dividers, width 400 mm

Dimension W x H mm	Article number	
	Depth: 507 mm	Depth: 760 mm
400 x 105	ZM-340-040.1-050100	ZM-340-040.1-076100
400 x 140	ZM-340-040.1-050140	ZM-340-040.1-076140
400 x 210	ZM-340-040.1-050200	ZM-340-030.1-076200



Drawer (300 x 210 x 760 mm)



Drawer (400 x 140 x 507 mm)



Drawer (400 x 105 x 507 mm)

ACCESSORIES DRAWERS

The drawers can be equipped with various accessories. We carry a variety of dividers, anti-slip mats, plastic inserts and universal dividing plates.

Anti-slip mats standard drawers

Dimension W in mm	Article number		
	Depth: 230 mm	Depth: 330 mm	Depth: 430 mm
447	ZM-160-044.1-023	ZM-160-044.1-033	ZM-160-044.1-043
700	ZM-160-070.1-023	ZM-160-070.1-033	ZM-160-070.1-043
954	ZM-160-095.1-023	ZM-160-095.1-033	ZM-160-095.1-043
1207	ZM-160-120.1-023	ZM-160-120.1-033	ZM-160-120.1-043



Anti-slip mat

Anti-slip mats side door positioned drawers

Dimension W in mm	Article number	
	Depth: 507 mm	Depth: 760 mm
300	ZM-160-030.1-047	ZM-160-030.1-073
400	ZM-160-040.1-047	ZM-160-040.1-073



Anti-slip mat

Aluminium dividers (set of 3 pieces) standard drawers

Dimension H in mm	Article number		
	Depth: 260 mm	Depth: 360 mm	Depth: 460 mm
70	ZM-111-026.1-070	ZM-111-036.1-070	ZM-111-046.1-070
100	ZM-111-026.1-100	ZM-111-036.1-100	ZM-111-046.1-100
140	ZM-111-026.1-140	ZM-111-036.1-140	ZM-111-046.1-140
170	ZM-111-026.1-170	ZM-111-036.1-170	ZM-111-046.1-170
200	ZM-111-026.1-200	ZM-111-036.1-200	ZM-111-046.1-200



Plastic inserts

Aluminium dividers (set of 3 pieces) drawers side door position

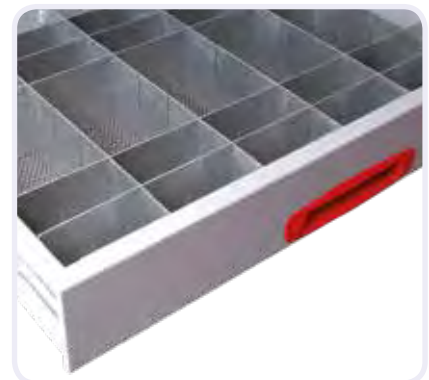
Dimension H in mm	Article number	
	Width: 360 mm	Width: 460 mm
100	ZM-111-036.1-090	ZM-111-046.1-090
140	ZM-111-036.1-140	ZM-111-046.1-140
200	ZM-111-036.1-200	ZM-111-046.1-200

Plastic inserts

Dimension W x D mm	Color Inserts	Article number	
		Hight: 45 mm	Hight: 63 mm
54 x 54	●	ZM-116-054-054045	ZM-116-054-054063
54 x 108	●	ZM-116-054-108045	ZM-116-054-108063
108 x 108	●	ZM-116-108-108045	ZM-116-108-108063
108 x 162	●	ZM-116-108-162045	ZM-116-108-162063
108 x 216	●	ZM-116-108-216045	ZM-116-108-216063

Universal flexible compartmentsets (length + width)

Dimension H in mm	Article number		
	Depth drawer: 260 mm	Depth drawer: 360 mm	Depth drawer: 460 mm
70	ZM-112-026007	ZM-112-036007	ZM-112-046007
100	ZM-112-026010	ZM-112-036010	ZM-112-046010
140	ZM-112-026014	ZM-112-036014	ZM-112-046014



Universal compartmentsets

ACCESSORIES DRAWERS

Drawer slides to combine with standard drawers (set of 2 pieces)

Dimension L in mm	Article number
260	ZM-181-L01-260-01
360	ZM-181-L01-360-01
460	ZM-181-L01-460-01



Slides, length 360 and 460 mm



Detail slide

Drawer slides to combine with drawers side door positioned (set of 2 pieces)

Dimension L in mm	Article number
507	ZM-181-L01-507-01
760	ZM-181-L01-760-01



Slides, length 507 and 760 mm





CASE PLATEAU

Cases can be incorporated into the system in various ways. For example, you can install a case plateau with extendable telescopic slides. The case can then be opened while the case still sits on the plateau. Another possibility is to store cases on a shelf or inbetween the side panels by means of a special mounting set.

Shelf to store cases

Dimension L x H mm	Article number		Number of cases
	Depth: 360 mm	Depth: 460 mm	
447 x 61	ZM-334-044.1-036006	ZM-334-044.1-046006	1 case (ZM 115)
700 x 61	ZM-334-070.1-036006	ZM-334-070.1-046006	1 case (ZM 115)
954 x 61	ZM-334-095.1-036006	ZM-334-095.1-046006	2 cases (ZM 115)
1207 x 61	ZM-334-120.1-036006	ZM-334-120.1-046006	2 cases (ZM 115)
1461 x 61	ZM-334-146.1-036006	ZM-334-146.1-046006	3 cases (ZM 115)



Extendable plateau for cases

Extendable plateau for one case (ZM 115) each

Dimension L x H mm	Article number		Color Button
	Depth: 360 mm	Depth: 460 mm	
447 x 61	ZM-180-095.1-036006	×	● ●



Extendable plateau for cases

Extendable plateau for one systainer each

Dimension L x H mm	Article number		Color Button
	Depth: 360 mm	Depth: 460 mm	
447 x 61	ZM-180-050.5-036006	×	● ●

Slides to combine with case and systainer plateau (set of 2 pieces)

Dimension W in mm	Article number
360	ZM-181-K01-360-01
460	ZM-181-K01-460-01



Slides to combine with case and systainer plateaus

SORTIMENTS CASES

Our range of carrying cases (with or without plastic inserts) is designed for storing fixtures or small auxiliary materials. The robust steel (powder-coated) cases have a plastic foam layer on the inside. This ensures proper protection and coverage of the inserts. Cases are available in the standard size of 440 x 330 mm and in four heights (66, 100, 130 and 170 mm). The 170 mm case meant for storing smaller tools (often electric (hand) tools) are only available without dividers.

Cases with inserts, 66 mm high

Dimension WxDxH mm	Number of inserts	Article number	Color Case
440 x 330 x 66	empty	ZM-115-044.1-033066-00	● ●
	8x ●	ZM-115-044.1-033066-08	● ●
	12x ●	ZM-115-044.1-033066-12	● ●
	12x ● 6x ● 3x ● 2x ●	ZM-115-044.1-033066-23	● ●
	24x ●	ZM-115-044.1-033066-24	● ●
	48x ●	ZM-115-044.1-033066-48	● ●



Case 66 mm high



Cases 100 mm high

Cases with inserts, 100 mm high

Dimension WxDxH mm	Number of inserts	Article number	Color Case
440 x 330 x 100	empty	ZM-115-044.1-033100-00	● ●
	12x ● 9x ● 6x ●	ZM-115-044.1-033100-27	● ●
	12x ● 6x ● 9x ● 2x ● 3x ●	ZM-115-044.1-033100-32	● ●
	12x ● 30x ● 3x ● 2x ●	ZM-115-044.1-033100-47	● ●



Case 100 mm high

Cases with inserts, 130 mm high

Dimension WxDxH mm	Number of inserts	Article number	Color Case
440 x 330 x 130	empty	ZM-115-044.1-033130-00	● ●
	12x ● 9x ● 6x ●	ZM-115-044.1-033130-27	● ●
	12x ● 6x ● 9x ● 2x ● 3x ●	ZM-115-044.1-033130-32	● ●
	24x ● 12x ● 6x ● 4x ●	ZM-115-044.1-033130-46	● ●
	12x ● 30x ● 3x ● 2x ●	ZM-115-044.1-033130-47	● ●



Case 130 mm high

Cases, 170 mm high

Dimension WxDxH mm	Number of inserts	Article number	Color Case
440 x 330 x 170	empty	ZM-115-044.1-033170-00	● ●



Case 170 mm high



SORTIMENTS CASES

In addition to the sortiment cases, we also have cases with a variable layout. This layout is equipped on all sides with panels and delivered standard with 1 length divider and 2 width dividers. You can position those dividers in such a way that you can realize your own desired division of compartments.

Cases with variable lay-out

Dimension WxDxH mm	Article number
440x330x066	ZM-117-044.1-033066.01
440x330x100	ZM-117-044.1-033100.01
440x330x130	ZM-117-044.1-033130.01
440x330x170	ZM-117-044.1-033170.01

Insert variable lay-out delivered apart (loose)

Dimension WxDxH mm	Article number
440x330x066	ZM-117-044.2-066
440x330x100	ZM-117-044.2-100
440x330x130	ZM-117-044.2-130
440x330x170	ZM-117-044.2-170



Cases 100 mm high



Case 130 mm high



TOP TRAYS

Top trays (to be mounted on all units) make up the final components parts of our shelving system. Longer materials, tools and large carton boxes can be placed in the top trays. The aluminum dividers can be placed wherever they are required. The optional anti-slip mats enhance safety and reduce noise.

Aluminium top tray with 3 dividers

Dimension W x H mm	Article number			Color Top tray
	Depth: 260 mm	Depth: 360 mm	Depth: 460 mm	
507 x 105	ZMA-141-050.1-026010	ZMA-141-050.1-036010	ZMA-141-050.1-046010	● ●
760 x 105	ZMA-141-076.1-026010	ZMA-141-076.1-036010	ZMA-141-076.1-046010	● ●
1014 x 105	ZMA-141-101.1-026010	ZMA-141-101.1-036010	ZMA-141-101.1-046010	● ●
1267 x 105	ZMA-141-126.1-026010	ZMA-141-126.1-036010	ZMA-141-126.1-046010	● ●
1521 x 105	ZMA-141-152.1-026010	ZMA-141-152.1-036010	ZMA-141-152.1-046010	● ●



Top tray

Aluminium top tray with flap, right

Dimension W x H mm	Article number		Color Top tray
	Depth: 260 mm	Depth: 360 mm	
1014 x 105	ZMA-142-101.1-026010-R	ZMA-142-101.1-036010-R	● ●
1267 x 105	ZMA-142-126.1-026010-R	ZMA-142-126.1-036010-R	● ●
1521 x 105	ZMA-142-152.1-026010-R	ZMA-142-152.1-036010-R	● ●



Top tray

Aluminium top tray with flap, left

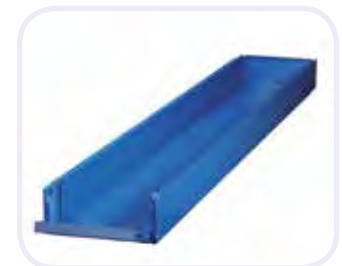
Dimension W x H mm	Article number		Color Top tray
	Depth: 260 mm	Depth: 360 mm	
1014 x 105	ZMA-142-101.1-026010-L	ZMA-142-101.1-036010-L	● ●
1267 x 105	ZMA-142-126.1-026010-L	ZMA-142-126.1-036010-L	● ●
1521 x 105	ZMA-142-152.1-026010-L	ZMA-142-152.1-036010-L	● ●



Detail flap

Steel extendable telescopic toptrays from 1600 to 3100 mm

Dimension L in mm	Article number			Color Top tray
	Depth: 260 mm	Depth: 360 mm	Depth: 460 mm	
1600 - 3100	ZM-144-026.1-016010	ZM-144-036.1-016010	ZM-144-046.1-016010	● ●



Extendable toptray

Aluminium extendable telescopic toptrays from 1600 to 3100 mm

Dimension L in mm	Article number			Color Top tray
	Depth: 260 mm	Depth: 360 mm	Depth: 460 mm	
1600 - 3100	ZMA-144-026.1-016010	ZMA-144-036.1-016010	ZMA-144-046.1-016010	● ●

Anti-slip mats shelves

Dimension W in mm	Article number		
	Depth: 250 mm	Depth: 350 mm	Depth: 450 mm
447	ZM-160-044.1-025	ZM-160-044.1-035	ZM-160-044.1-045
700	ZM-160-070.1-025	ZM-160-070.1-035	ZM-160-070.1-045
954	ZM-160-095.1-025	ZM-160-095.1-035	ZM-160-095.1-045
1207	ZM-160-120.1-025	ZM-160-120.1-035	ZM-160-120.1-045
1461	ZM-160-146.1-025	ZM-160-146.1-035	ZM-160-146.1-045



Anti-slip mat



HEAVY DUTY SLED

The heavy duty sled can be used for a wide range of purposes. For example, for placing generator sets, compressors, or other heavy materials that are a part of the van's standard equipment but need to be operated outside of the van. Also, these sleds are often used for pick ups so that the transported materials can be pulled out of the vehicle.

Highlights of our heavy duty sled:

- Ball-bearing performance
- Up to 200 kg loads
- Up to 73% extractable
- Convenient for lifting heavy materials in and out of the van
- Easily combined with the other components of the shelving system
- Can be combined with a wooden plate for use as a workbench

Steel heavy duty sled

Dimension L in mm	Article number		
	Width: 360mm	Width: 460 mm	Width: 760 mm
760	ZM-145-036.1-076006	ZM-145-046.1-076006	ZM-145-076.1-076006
1014	ZM-145-036.1-101006	ZM-145-046.1-101006	ZM-145-076.1-101006
1267	ZM-145-036.1-126006	ZM-145-046.1-126006	ZM-145-076.1-126006
1521	ZM-145-036.1-152006	ZM-145-046.1-152006	ZM-145-076.1-152006



Heavy duty sled 760 x 760 mm



Heavy duty sled 460 x 1014 mm



Heavy duty sled 360 x 1267 mm



Detail front of heavy duty sled



WORKBENCH

The wooden workbenches (35 mm thick) can be placed on several places. Most of the time are they used in combination of a vise. Available in the standard measurements but also 'oversized' when required.

Workbench

Dimension W in mm	Article number	
	Depth: 360mm	Depth: 460 mm
507	ZM-146-050.1-036004	ZM-146-050.1-046004
760	ZM-146-076.1-036004	ZM-146-076.1-046004
1014	ZM-146-101.1-036004	ZM-146-101.1-046004
1267	ZM-146-126.1-036004	ZM-146-126.1-046004
1521	ZM-146-152.1-036004	ZM-146-152.1-046004
1774	ZM-146-177.1-036004	ZM-146-177.1-046004
2027	ZM-146-202.1-036004	ZM-146-202.1-046004



ACCESSORIES

The anti-slip mats assure that the materials stay in place. Anti-slip mats are used also in drawers and shelves to protect the materials and reduce the noise.

Anti-slip mats standard drawers

Dimension W in mm	Article number		
	Depth: 230 mm	Depth: 330 mm	Depth: 430 mm
447	ZM-160-044.1-023	ZM-160-040.1-033	ZM-160-040.1-043
700	ZM-160-070.1-023	ZM-160-066.1-033	ZM-160-066.1-043
954	ZM-160-095.1-023	ZM-160-099.1-033	ZM-160-099.1-043
1207	ZM-160-120.1-023	ZM-160-120.1-033	ZM-160-120.1-043



Anti-slip mats for drawers

Anti-slip mats side door positioned drawers

Dimension W in mm	Article number	
	Depth: 507 mm	Depth: 760 mm
300	ZM-160-030.1-047	ZM-160-030.1-073
400	ZM-160-040.1-047	ZM-160-040.1-073



Anti-slip mats extendable telescopic toptrays

Anti-slip mats extendable telescopic toptrays

Dimension W in mm	Article number		
	Depth: 250 mm	Depth: 350 mm	Depth: 450 mm
3100	ZM-160-310.1-025	ZM-160-310.1-035	ZM-160-310.1-045

Anti-slip mats top trays

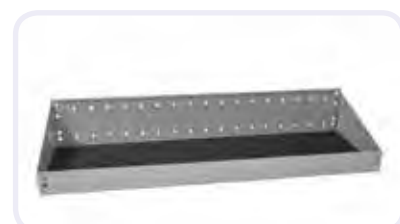
Dimension W in mm	Article number		
	Depth: 250 mm	Depth: 350 mm	Depth: 450 mm
507	ZM-160-050.1-025	ZM-160-050.1-035	ZM-160-050.1-045
760	ZM-160-076.1-025	ZM-160-076.1-035	ZM-160-076.1-045
1014	ZM-160-101.1-025	ZM-160-101.1-035	ZM-160-101.1-045
1267	ZM-160-126.1-025	ZM-160-126.1-035	ZM-160-126.1-045
1521	ZM-160-152.1-025	ZM-160-152.1-035	ZM-160-152.1-045



Anti-slip mat top tray

Anti-slip mats used in different shelves

Dimension W in mm	Article number		
	Depth: 250 mm	Depth: 350 mm	Depth: 450 mm
447	ZM-160-044.1-025	ZM-160-044.1-035	ZM-160-044.1-045
700	ZM-160-070.1-025	ZM-160-070.1-035	ZM-160-070.1-045
954	ZM-160-095.1-025	ZM-160-095.1-035	ZM-160-095.1-045
1207	ZM-160-120.1-025	ZM-160-120.1-035	ZM-160-120.1-045
1461	ZM-160-146.1-025	ZM-160-146.1-035	ZM-160-146.1-045



Anti-slip mats for shelves

LED LIGHTS

In addition to the existing lighting in the vans, there is the option of installing extra LED lighting.

This LED lighting is usually connected to the existing circuit of indoor lighting but can also be directly connected to the 12-volt battery of your van. This must then in combination with a switch and a fuse.

Zevim has a compact but highly effective range of LEDs with the necessary accessories. The LED can be mounted in 3 ways. By screwing, double-sided taping or by using the mounting clips. All of these mounting materials are also supplied as standard. The LED is also provided with a 3 mtr plug-in cable.

LED light with 3 mtr cable and mounting materials

Dimension W in mm	Article number
300	ZM-163-03.01-0300-01
500	ZM-163-03.01-0500-01
1000	ZM-163-03.01-1000-01



LED light 300 mm, 500 mm and 1000 mm



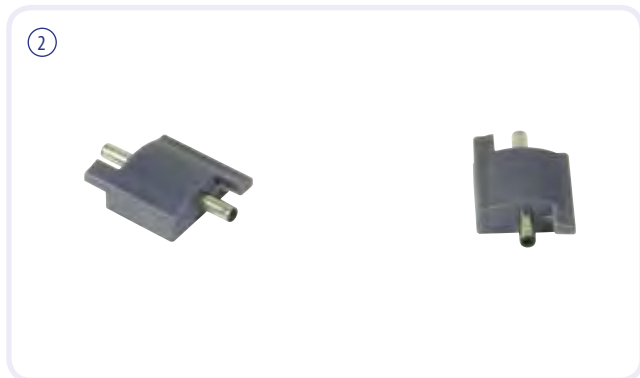
ACCESSORIES LED LIGHTS

Accessories LED lights

Description	Article number	
Switch provided with 3 mtr. plug-in cable	ZM-163-03.02-001	①
Plug-inn connector 180°	ZM-163-03.02-002	②
Plug-inn connector 90°	ZM-163-03.02-003	③
Plug-inn cable 3 mtr	ZM-163-03.02-004	④



Switch provided with 3 mtr. plug-in cable



Plug-inn connector 180°



The LED can be mounted in 3 ways. By screwing, double-sided taping or by using the mounting clips. All of these mounting materials are also supplied as standard.



Plug-inn connector 90°



Plug-inn cable 3 mtr

ANTI SLIP MATS

A frequently heard problem is that cargo is not properly secured during transport. This can lead to dangerous situations due to the shifting of the load or even damage during an emergency stop.

An anti-slip mat can make the difference in such kind of situations.

The anti-slip mat can be used on both sides and retains its anti-slip value up to an angle of almost 60° and can be used on almost any type of material. The anti-slip mat can be used on all possible terrains such as in the workshop, the factory, car, camper or on the boat or private in the house.

Highlights of our anti slip mat open structure:

- Industrial quality
- Resistant to oil, gasoline, diesel, acid and lye
- Light weight (just 550gr/m²)
- TUV certified
- Hardly flammable (self-ignition temperature is approx. 350° C)
- Temperature resistance from -25° to 100° C
- Washable up to 60° C
- Applicable in the food industry
- Easy to cut to size

Highlights of our anti slip mat closed structure:

- Industrial quality
- Resistant to oil, gasoline, diesel, acid and lye
- Closed, dense mat; no absorption of liquids
- Can be used up to a tested load of 82.5 tons
- Developed to drive over it with a pallet truck
- Only 4,5 mm thick
- Temperature resistance from -40° to 120° C
- Easy to clean
- Easy to cut to size

Anti slip mats open structure on the roll

Dimension W in mm	Article number
	<i>Roll length: 10 mtr</i>
200	Z-182-020100
250	Z-182-025100
300	Z-182-030100
330	Z-182-033100
350	Z-182-035100
400	Z-182-040100
430	Z-182-043100
450	Z-182-045100
500	Z-182-050100
600	Z-182-060100
800	Z-182-080100
1000	Z-182-100100
1200	Z-182-120100
1800	Z-182-180100
2400	Z-182-240100





**Anti slip mats closed, dense mat
on the rol**

Dimension W in mm	Article number
	<i>Rolllength: 4 mtr</i>
600	Z-181-060400
800	Z-181-080400
1000	Z-181-100400
1200	Z-181-120400
1600	Z-181-160400



ACCESSORIES

Jerrycanholders with jerrycans, tap and rubber strap.

The large opening ensures a simple filling without spilling and can also be used to thoroughly clean the inside of the jerry can. Dimension jerrycanholder: W280x-D145xH170 mm

Content size	Article number
5 ltr	ZM-150-05.05-01
10 ltr	ZM-150-05.10-01



Jerrycan loose

Content size	Article number
5 ltr	ZM-150-06.02-001.05
10 ltr	ZM-150-06.02-001.10



Accessories for the jerrycan loose

Description	Article number
Tap loose	ZM-150-06.02-002
Rubber strap loose	ZM-150-006.03-001



Jerrycanholder for 2*, 3** or 5*** jerrycans (10 or 20 liter)

Dimension W x D x H mm	Article number
507 x 360 x 690*	ZM-150-03.1020.02
760 x 360 x 690**	ZM-150-03.1020.03
1014 x 360 x 690***	ZM-150-03.1020.05



Aluminium divider high, 1 piece for ZMA 330

Article number		
Depth: 260 mm	Depth: 360 mm	Depth: 460 mm
ZMA-330-260	ZMA-330-360	ZMA-330-460



Aluminium dividers high, set of 3 dividers for ZMA 330

Article number		
Depth: 260 mm	Depth: 360 mm	Depth: 460 mm
ZMA-330-260-3	ZMA-330-360-3	ZMA-330-460-3



Sealant cartridge holder for 4*, 5** or 6*** tubes

Dimension W x D x H mm	Article number
240 x 121 x 215*	ZM-153-01.1-4
299 x 121 x 215**	ZM-153-01.1-5
358 x 121 x 215***	ZM-153-01.1-6



Aerosol holder for 2*, 3** or 4*** spray cans

Dimension W x D x H mm	Article number
184 x 110 x 150*	ZM-155-01.1-2
271 x 110 x 150**	ZM-155-01.1-3
358 x 110 x 150***	ZM-155-01.1-4



Mini aerosol holder for 6 spray cans

Dimension W x D x H mm	Article number
358 x 96 x 162	ZM-154-01.1-6



Holder for PU-container for 2*, 3** or 4*** containers

Dimension W x D x H mm	Article number
184 x 146 x 292*	ZM-156-01.1-2
271 x 146 x 292**	ZM-156-01.1-3
358 x 146 x 292***	ZM-156-01.1-4



Aluminium divider low, 1 piece for ZMA 331

Article number		
Depth: 260 mm	Depth: 360 mm	Depth: 460 mm
ZMA-331-260	ZMA-331-360	ZMA-331-460



Aluminium dividers low, set of 3 dividers for ZMA 331

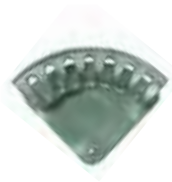
Article number		
Depth: 260 mm	Depth: 360 mm	Depth: 460 mm
ZMA-331-260-3	ZMA-331-360-3	ZMA-331-460-3



ACCESSORIES

Hose holder aluminium

Dimension W x H mm	Article number
155 x 70	ZM-157-155.070-S
225 x 108	ZM-157-225.108-M
272 x 143	ZM-157-272.143-L
366 x 187	ZM-157-366.187-XL



Equipment boards

Dimension W x D x H mm	Article number
500 x 15 x 450	Z-183-050.1-001045.1
750 x 15 x 450	Z-183-075.1-001045.1
1000 x 15 x 450	Z-183-100.1-001045.1
1500 x 15 x 450	Z-183-150.1-001045.1
2000 x 15 x 450	Z-183-200.1-001045.1



Gasbottle holder (Appropriate for 2 bottles Ø 140 mm)

Dimension W x D x H mm	Article number
360 x 145 x 600	ZM-149-01.02-00



Universal gasbottle holder

Dimension W x D x H mm	Article number
1014 x 260 x 855	ZM-149-02.101.1-026085
1014 x 460 x 855	ZM-149-02.101.1-046085



Dispenser for MINI* and MIDI** paper rolls

Dimension W x D x H mm	Article number
165 x 185 x 290*	Z-100-01-016.1-029
260 x 265 x 330**	Z-100-01-026.1-033



Roll of paper (1 piece packaging) MINI* and MIDI**

Dimension H x L mm	Article number
200 x 13000*	Z-101-02-020.1-130-1
230 x 35000**	Z-101-02-020.1-350-1



Rolls of paper, pack of 12x MINI* or 6x MIDI**

Dimension H x L mm	Article number
200 x 13000*	Z-101-02-020.1-130-12
230 x 35000**	Z-101-02-020.1-350-6



Refill package hand cleaning for dispenser

Description	Article number
Flacon 1 liter	Z-111-310904
Container 3 liter	Z-111-310806



Hand cleaning dispenser 1 ltr

Description	Article number
Set complete with 1 ltr soap, pump and wall holder	Z-110-310879.SET
Pump 1 liter flacon	Z-110-310880
Wall holder 1 liter flacon	Z-110-310879



Hand cleaning dispenser 3 ltr

Description	Article number
Set complete with 3 ltr soap, pump and wall holder	Z-110-310890.SET
Pump 3 liter container	Z-110-310890
Wall holder 3 liter container	Z-110-310890WAND



ACCESSORIES

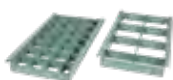
Storage box steel

Dimension D x H x W in mm	Article number
200 x 500 x 260	ZM-159-026.1-020050
200 x 500 x 360	ZM-159-036.1-020050
200 x 500 x 460	ZM-159-046.1-020050



Topray for storage box steel

Dimension D x H x W in mm	Article number
50 x 50 x 360	ZM-159-036.1-050050-1
100 x 100 x 360	ZM-159-036.1-100100-1
50 x 50 x 460	ZM-159-046.1-050050-1
100 x 100 x 460	ZM-159-046.1-100100-1



Bottomtray for storage box steel

Dimension D x H x W in mm	Article number
50 x 50 x 360	ZM-159-036.1-050050-2
100 x 100 x 360	ZM-159-036.1-100100-2
50 x 50 x 460	ZM-159-046.1-050050-2
100 x 100 x 460	ZM-159-046.1-100100-2

Vise

Dimension W in mm	Article number
100 (Gedore M90)	ZM-158-01.1-010
125 (Gedore M91)	ZM-158-01.1-012
100 (Panther, with pipe clamp)	ZM-158-02.1-010
120 (Panther, with pipe clamp)	ZM-158-02.1-012



Turntable for vise

Description	Article number
Gedore M91	ZM-158-03.1-01125
Gedore P120	ZM-158-03.1-02120



Document holder

Description	Article number
A4 (210 x 297 mm)	ZM-152-01.1-A4



Mounting bracket type 1, left* and right**

Dimension L x W x H mm	Article number
100 x 40 x 60*	ZM-161-01.01-10-L-01
100 x 40 x 60**	ZM-161-01.01-10-R-01



Mounting bracket type 2

Dimension L x W x H mm	Article number
60 x 40 x 60	ZM-161-02.01-06-00



Mounting bracket type 3

Dimension L x W mm	Article number
150 x 40	ZM-161-03.01-15-00
200 x 40	ZM-161-03.02-20-00
250 x 40	ZM-161-03.03-25-00



Mounting bracket type 4

Dimension L x W mm	Article number
60/30/60 x 40	ZM-161-04.01-03.01
60/80/60 x 40	ZM-161-04.02-08.01
60/130/60 x 40	ZM-161-03.03-13.01



Mounting bracket type 5

Dimension L x W mm	Article number
150 x 40/20	ZM-161-05.01-15-00
250 x 40/20	ZM-161-05.02-25-00
300 x 40/20	ZM-161-05.03-30-00



Mounting bracket type 6

Dimension L x W mm	Article number
375/275 x 30	ZM-161-06.01-01-00



ACCESSORIES

Blind rivet nuts

Description	Article number
Blind rivet nuts M6	Z-115-BKM-M6
Blind rivet nuts M8	Z-115-BKM-M8
Blind rivet nuts M6 VZ	Z-115-BKM-M6VZ



Screw with flange and sealant

Description	Article number
Screw with flange and sealant 6 x 15	ZM-BEV-LBK-FLENSSCR-M6x15SG



Blind rivets

Description	Article number
Blind rivets 4,0 x 10	ZM-BEV-BL.KLINKNAGEL4,0x9,5
Blind rivets 4,8 x 12	ZM-BEV-BL.KLINKNAGEL4,8x12
Blind rivets 4,8 x 20	ZM-BEV-BL.KLINKNAGEL4,8x20
Blind rivets 4,8 x 25	ZM-BEV-BL.KLINKNAGEL4,8x25



Cage nuts

Description	Article number
Cage nuts M6	ZM-BEV-KOOIMOER-M6-01



Screw with flange

Description	Article number
Screw with flange M6 x 12	ZM-BEV-LBK-FLENSSCR-M6x12
Screw with flange M6 x 16	ZM-BEV-LBK-FLENSSCR-M6x16



Spray paint

Color in RAL	Article number
RAL 7004 (grey)	Z-120-01-7004-00
RAL 5010 (blue)	Z-120-01-5010-00
RAL 3002 (red)	Z-120-01-3002-00



Rampa nuts for bottom/in floors

Description	Article number
Rampa nuts M8	ZM-BEV-RAMPAMOER-M8



Bolts

Description	Article number
Din 933 M8 x 16	ZM-BEV-DIN993-M8x16
Din 933 M8 x 20	ZM-BEV-DIN993-M8x20
Din 933 M8 x 25	ZM-BEV-DIN993-M8x25
Din 933 M8 x 30	ZM-BEV-DIN993-M8x30
Din 933 M8 x 40	ZM-BEV-DIN993-M8x40



Washers

Description	Article number
Din 125 M6	ZM-BEV-DIN125-M6
Din 125 M8	ZM-BEV-DIN125-M8



Washers

Description	Article number
Din 127 M6	ZM-BEV-DIN127-M6
Din 127 M8	ZM-BEV-DIN127-M8



Washers

Description	Article number
Din 9021 M6	ZM-BEV-DIN9021-M6
Din 9021 M8	ZM-BEV-DIN9021-M8



Nuts

Description	Article number
Din 985 M6	ZM-BEV-DIN985-M6
Din 985 M8	ZM-BEV-DIN985-M8



EQUIPMENT BOARDS

The equipment boards are in different sizes available. Some with the exact dimension of our systems but also in standard boards. As well in aluminium (subbases) as well in steel powder coated (boards). All of these boards en subbases can be comined with the hooks sortiment which you find on page 59 and 60.

Aluminium subbases

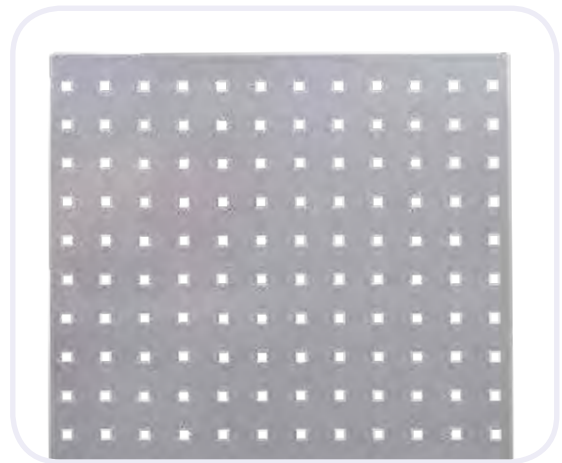
Dimension W x D x H mm	Article number
2000 x 1,0 x 1500	ZM-151-200.1-000150

Universal equipment boards

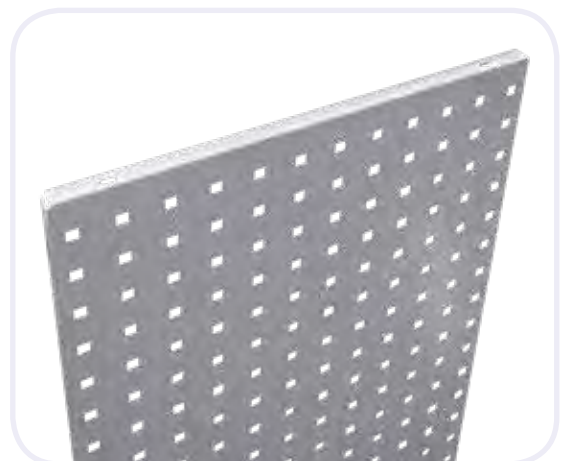
Dimension W x D x H mm	Article number <i>Color: RAL 7004</i>
500 x 15 x 450	Z-183-050.2-001045.20
750 x 15 x 450	Z-183-075.2-001045.20
1000 x 15 x 450	Z-183-100.2-001045.20
1500 x 15 x 450	Z-183-150.2-001045.20
2000 x 15 x 450	Z-183-200.2-001045.20



Aluminium subbases



Equipment boards (system dimensions; standard color RAL 7004)



Equipment boards (system dimensions; standard color RAL 7004)

TOOL HOLDER SORTIMENT

High quality tool hooks/clamps/holders.

Long lifespan because of the multiple layers of coating.

The red plastic screw ensure the hook in place with no damage on the boards.

Ø = Diameter in mm | L = Length in mm | W = Width in mm |

D = Depth in mm | H = Height in mm

Tool holder 45°

Dimension L in mm	Article number
50	Z-183-01-000005
100	Z-183-01-000010
150	Z-183-01-000015
200	Z-183-01-000020



Tool holder round

Dimension L x W mm	Article number
65 x 25	Z-183-06-007003



Tool holder angled hook 45°

Dimension L in mm	Article number
14/40	Z-183-02-001004



Tool holder straight double

Dimension L in mm	Article number
50	Z-183-07-000005
100	Z-183-07-000010
150	Z-183-07-000015



Tool holder straight

Dimension L in mm	Article number
50	Z-183-03-000005
100	Z-183-03-000010
150	Z-183-03-000015



Tool holder double 90°

Dimension L in mm	Article number
35	Z-183-08-000004
50	Z-183-08-000005
75	Z-183-08-000008
150	Z-183-08-000010



Tool holder 90°

Dimension L in mm	Article number
35	Z-183-04-000004
75	Z-183-04-000008
125	Z-183-04-000013



Machine holder

Dimension Ø mm	Article number
40	Z-183-09-000004
60	Z-183-09-000006
80	Z-183-09-000008



Pliers holder 90°

Dimension L in mm	Article number
35 x 20	Z-183-05-004002
55 x 20	Z-183-05-006002
75 x 20	Z-183-05-008002



Pipe holder

Dimension W / Ø mm	Article number
35 / 60	Z-183-10-004006
35 / 100	Z-183-10-004010



TOOL HOLDER SORTIMENT

High quality tool hooks/clamps/holders.

Long lifespan because of the multiple layers of coating.

The red plastic screw ensure the hook in place with no damage on the boards.

Ø = Diameter in mm | L = Length in mm | W = Width in mm |

D = Depth in mm | H = Height in mm

Can / aerosol holder

Dimension W / Ø mm	Article number
100 / 70	Z-183-11-010007



Cable brachet

Dimension L x W mm	Article number
150 x 37	Z-183-16-015004
200 x 37	Z-183-16-020004



Gereedschapshouder 6-delig

Dimension L x W mm	Article number
140 x 240	Z-183-12-014024



Can holder

Dimension W x D x H mm	Article number
500 x 80 x 50	Z-183-17-050.1-008005



Tool clamp single

Dimension Ø mm	Article number
6	Z-183-13-000006
10	Z-183-13-000010
13	Z-183-13-000013
16	Z-183-13-000016
19	Z-183-13-000019



Can / aerosol holder

Dimension W / Ø mm	Article number
300 / 70	Z-183-18-030007



Tool clamp single XL

Dimension Ø mm	Article number
25	Z-183-14-000025
28	Z-183-14-000028
32	Z-183-14-000032



Storage box

Dimension W x D x H mm	Article number
320 x 135 x 55	Z-183-19-032.1-013006



Socket holder

Dimension W x D x H mm	Article number
390 x 45 x 30	Z-183-20-039.1-005003



Tool clamp double

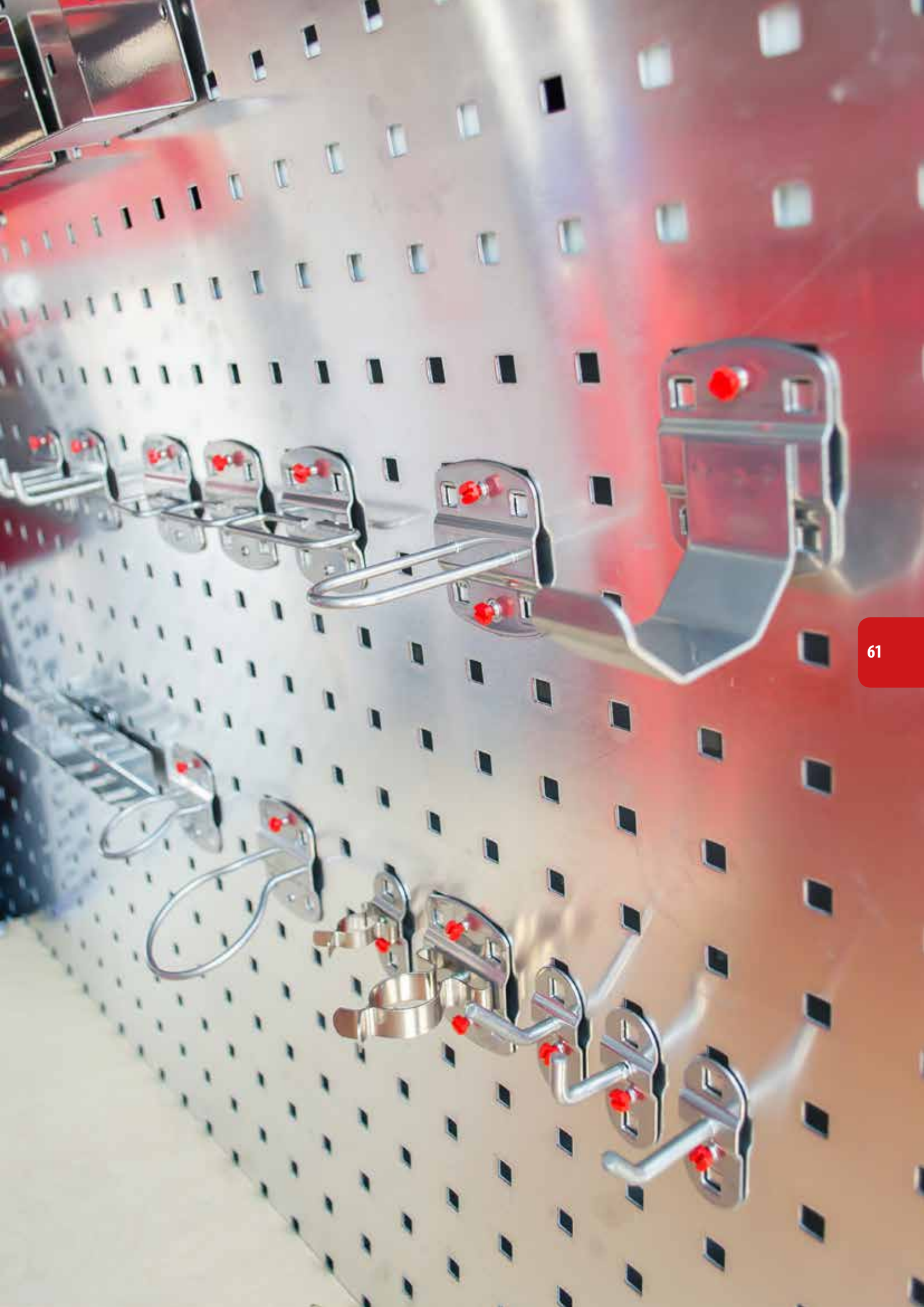
Dimension Ø mm	Article number
6	Z-183-15-000006
10	Z-183-15-000010
13	Z-183-15-000013
16	Z-183-15-000016
19	Z-183-15-000019



Holder for 6* or 12** screwdrivers

Dimension W x D x H mm	Article number
200 x 30 x 40*	Z-183-21-020.1-003004
390 x 30 x 40**	Z-183-21-039.1-003004







AIRLINE TRACKS

Hassle-free transportation with our product range of airline tracks. The right track for every type of vehicle and application. Find below the most important tracks. If you require any special track please call for further information. The tracks can be used on the floor as well against the walls. 2 and 2,5 mtr length are standard on stock. The others are sold in quantities and on demand.

Airline tracks with flange ①

Dimension W x H mm	Article number		
	Length: 1997 mm	Length: 2998 mm	Length: 6000 mm
54 x 10	ZM-164-005.1-199001	On request	On request
65 x 10	ZM-164-005.	On request	On request

Airline tracks rectangular, without flange ②

Dimension W x H mm	Article number			
	Length: 1997 mm	Length: 2998 mm	Length: 6000 mm	Length: 2500 mm
34 x 9,6	ZM-165-003.1-199001	On request	On request	×
28 x 11	×	×	×	ZM-165-003.2-250001

Airline tracks half circle, without flange ③

Dimension W x H mm	Article number		
	Length: 1997 mm	Length: 2998 mm	Length: 6000 mm
42 x 10	ZM-166-004.1-199001	ZM-166-004.1-299001	ZM-166-004.1-600001

Airline track with integrated rubber protection and 2 end caps ④

Dimension W x H mm	Article number
	Length: ca. 2000 mm (ca. 2064 with caps)
40 x 11	ZM-165-003.3-2000



Airline tracks with flange



Airline tracks rectangular, without flange



Airline tracks half circle, without flange



Airline track with integrated rubber protection and 2 end caps

POLES, LASHING STRAPS AND LASHING POINTS

Even as by the airline tracks Zevim offers an variety of possibilities for cargo safety and guarantees also highest safety. The shoring poles, lashing straps, fittings and lashing points below are just a small range of the products we can supply you. Besides the lashing points, all other products can be used horizontally as well vertically.

Shoring poles

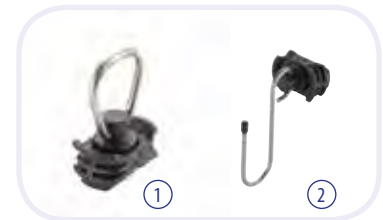
Description	Article number			
	Adjustable: 650 - 900 mm, blocking strength BC daN 300	Adjustable: 1250 - 1750 mm, blocking strength BC daN 300	Adjustable: 1680 - 2180 mm, blocking strength BC daN 250	Adjustable: 2000 - 2500 mm, blocking strength BC daN 250
With protective sleeve	ZM-167-065-900.1	ZM-167-125-175.1	ZM-167-168-218.1	ZM-167-200-250.1



Shoring poles

Fittings for airline tracks

Ø Opening in mm	H in mm	Ring thickness in mm	Max working load	Article number
25,0	66	4,5	500 daN	ZM-168-025.1-066005 ①
hook	66	4,0	50 daN	ZM-168-025.2-066005 ②



Fittings for airline tracks

Lashing straps with fittings type 2

Total length mm	Lenght fixed part	Width strap	Max working load	Article number
1000	200	25 (with ratchet lock)	500 daN	ZM-171-100.1-030003.1
3000	500	25 (with ratchet lock)	500 daN	ZM-171-300.1-050003.1
3000	500	25 (with buckle lock)	250 daN	ZM-171-300.2-050003.1



Lashing straps with ratchet lock (left) and buckle lock(right)

Fittings with thread

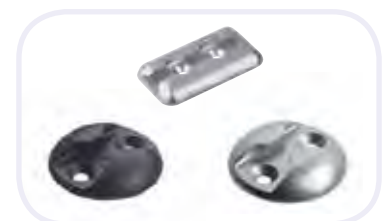
Thread	Ø threaded knob in mm	Clamping range in mm	Max working load	Article number
M8	50	0-29	1000 daN	ZM-169-08.00-29
M10	50	0-7	2000 daN	ZM-169-10.00-07
M10	50	7-14	2000 daN	ZM-169-10.07-14
M10	50	14-24	2000 daN	ZM-169-10.14-24
M10	50	24-34	2000 daN	ZM-169-10.24-34
M10	50	44-54	2000 daN	ZM-169-10.44-54



Fittings with thread

Lashing points

Dimension Ø / W x L mm	Max working load	Article number
44,5	400 daN	ZM-170-000044.0
44,5	400 daN	ZM-170-000044.1
76 x 45,5	1000 daN	ZM-170-076046.0



Lashing points







zevim

BEDRIJFSWAGENINRICHTING
VEHICLE RACKING SOLUTIONS
AMÉNAGEMENT DE VÉHICULES
FAHRZEUGEINRICHTUNGEN

HEADOFFICE

Zevim bedrijfswageninrichting bv

Nobelstraat 12

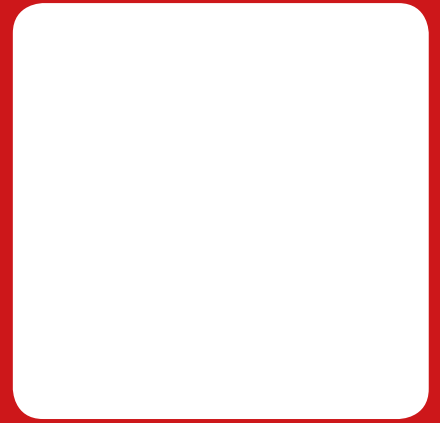
NL 6902 PH Zevenaar

Phone: 00 31 (0)316 - 52 78 64

E-Mail: info@zevim.nl

WWW.ZEVIM.EU

Zevim reseller / Zevim dealer:



**Ask also for our modular
underfloor drawer system.**

**Again, we are able to build just
about any configuration.**